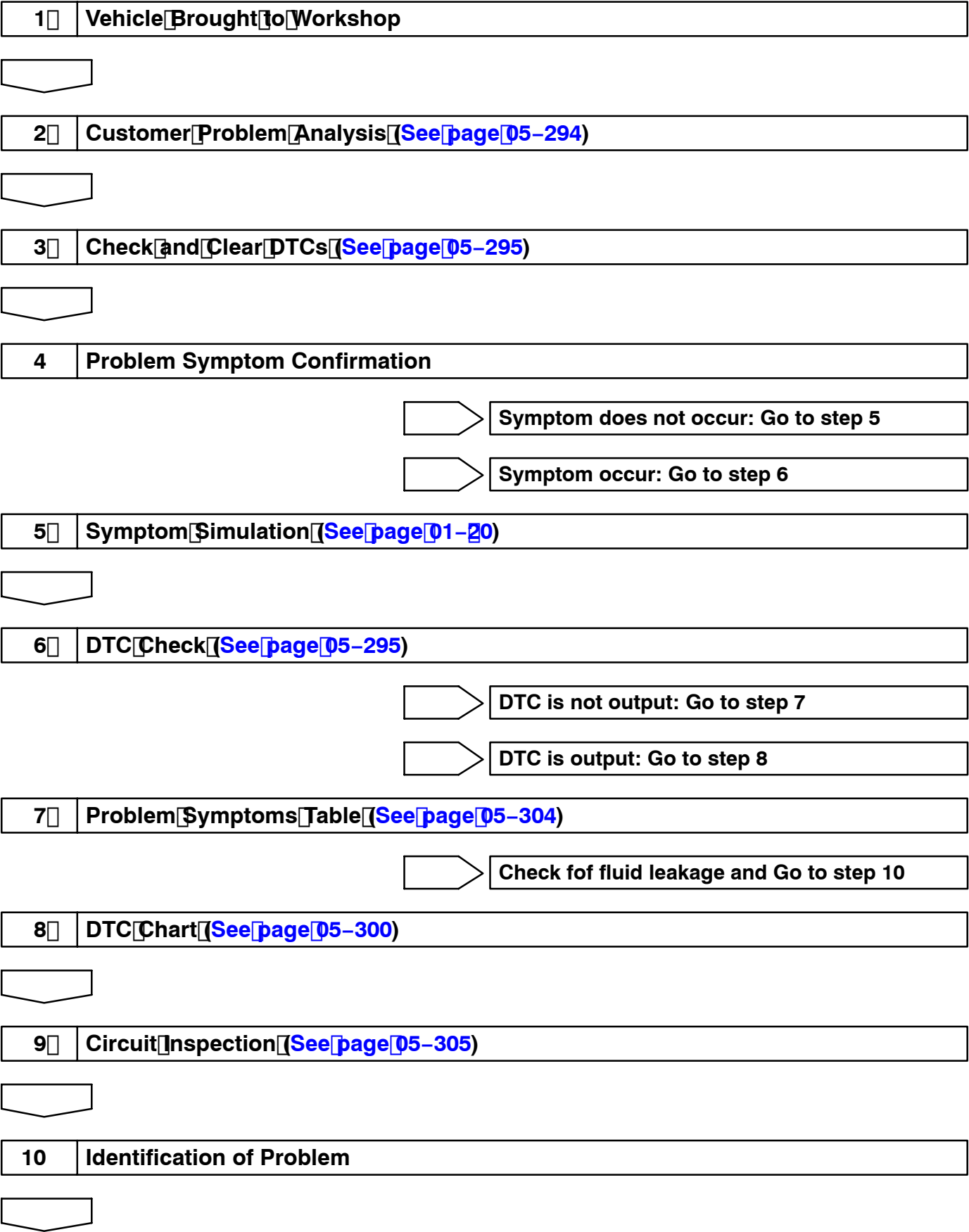


# ABS WITH BA & EBD SYSTEM (FF)

## HOW TO PROCEED WITH TROUBLESHOOTING

050YD-02



|           |               |
|-----------|---------------|
| <b>11</b> | <b>Repair</b> |
|-----------|---------------|



|           |                          |
|-----------|--------------------------|
| <b>12</b> | <b>Confirmation Test</b> |
|-----------|--------------------------|



|            |
|------------|
| <b>End</b> |
|------------|

HINT:

Step 3, 6, 8, 9, 12:

Diagnostic steps permitting the use of the hand-held tester.

Fail safe function:

When a failure occurs in the ABS system, the ABS warning light is lit and the ABS operation is prohibited.

In addition to this, when the failure which disables the EBD operation occurs, the brake warning light is lit as well and the EBD operation is prohibited.